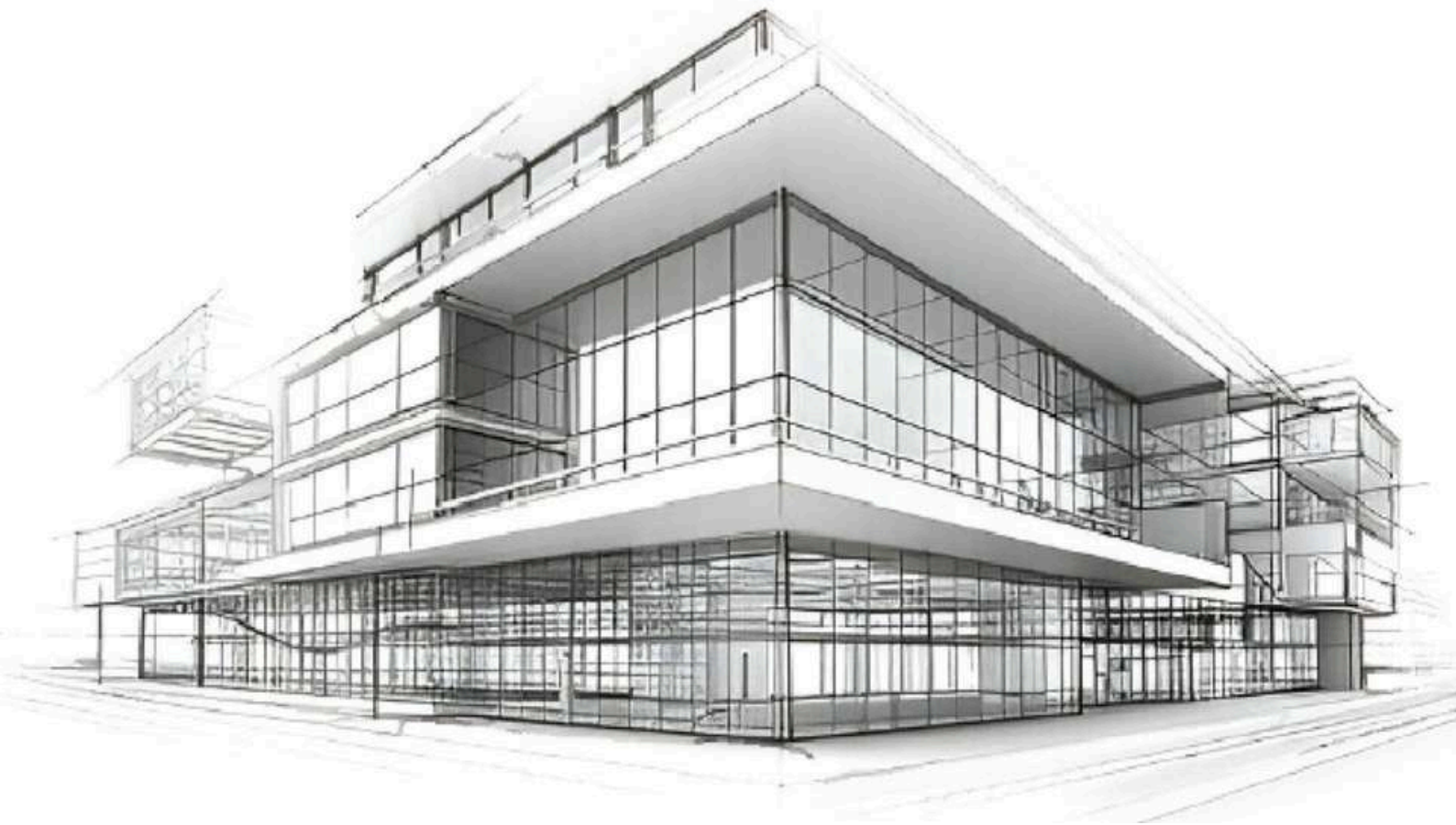




Quality Window and Door Systems

ALUMINIUM COLLECTION



SLEEK . STRONG. DURABLE



Welcome to

PEACE OF MIND

18

Of Operation

10

Years Of Guarantee

01

Window Solution

Since 2007 FRAMEZ represents a commitment to quality and innovation in the windows and doors industry. As a brand of New Era Industries (SMC PVT) Ltd, we are part of the reputable Lucky Group of Companies, known for its contributions to building materials, manufacturing, packaging and warehousing.

Our facilities include:

1-Fabrication Plant

2-Extrusion Plant

3-Lamination Plant

Choosing FRAMEZ means choosing reliability and peace of mind.



GREAT AESTHETICS



- Sleek, modern designs that elevate any space
- Customizable finishes to match your style
- Timeless appeal with premium craftsmanship

SECURE & RELIABLE



- Advanced locking systems for maximum security
- Durable materials built to last
- Tested and trusted for long term reliability

ENERGY EFFICIENT WINDOWS & DOORS

- ✓ Multi Chamber Profiles High
- ✓ Performance Glass Thermal
- ✓ Break Aluminium Profile

- ✓ The Thermal Insulation 1,50 W/m K
- ✓ Seal Type External / Internal double seal system
- ✓ Glass Thickness: 20 -24 -30 - 32 mm



ALUMINIUM RANGE

(THERMAL BREAK) OPENABLE WINDOW

Our Thermal Break Aluminium Window is designed for homes that demand both style and performance. Built with a high-insulation thermal break system, this openable window prevents heat transfer, reduces electricity costs & enhances year-round comfort.

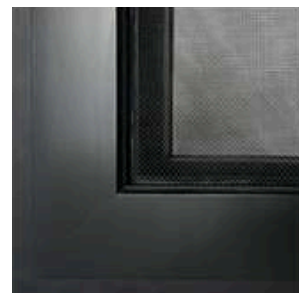
Crafted from premium, imported aluminium, it offers superior weather resistance, soundproofing, and optional built-in grill security, making it ideal for bedrooms, kitchens and modern commercial spaces.

- Modern design and functionality
- Imported hardware
- Sleek and slim frame
- Minimalistic structure
- Seamless connection



What Makes Thermal Break Openable Window a Smarter Choice?

- Built-in aluminium grill for added safety.
- Thermal break technology for superior insulation.
- Sleek profile perfect for modern homes.
- Effortless inward or outward opening.
- Reduces AC load with thermal barrier.
- Rustproof & weather-resistant frame.
- Child-safe, burglary-resistant construction.



LIFT & SLIDE ALUMINIUM WINDOW

The Lift & Slide Aluminium Window is built for luxury spaces that demand wide, unobstructed views with seamless movement. Its advanced lift mechanism lifts the sash off the frame for smooth sliding, offering superior sealing, energy efficiency, and effortless operation even with large glass panels.

Perfect for patios, balconies, and panoramic openings, this system combines aesthetics with robust engineering to ensure durability, noise insulation, and modern living comfort.

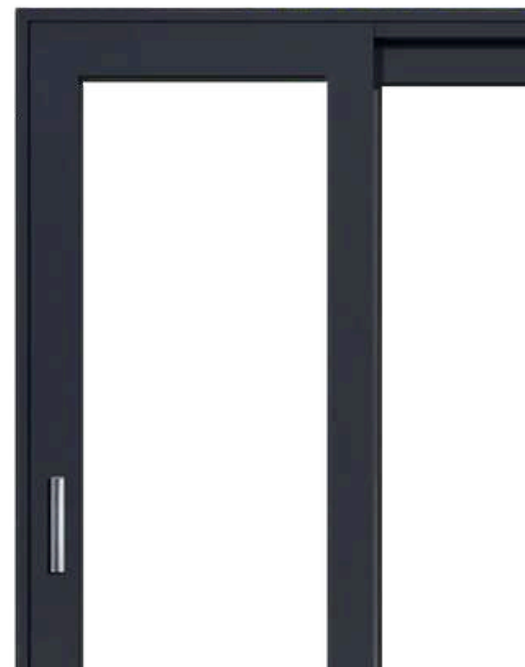


- Unmatched functionality and modern elegance
- Imported hardware
- Sleek and slim frame
- Effortless operation
- Enhanced durability
- Innovative design



Why Choose the Lift & Slide Aluminium Window?

- Opens wider than regular sliding windows
- Enhanced security with a multi-locking mechanism
- Premium imported hardware and rollers
- Ideal for large openings like patios & balconies
- Excellent thermal insulation and noise reduction
- Elegant minimalist design, perfect for luxury homes
- Long lifespan, corrosion & weather resistant

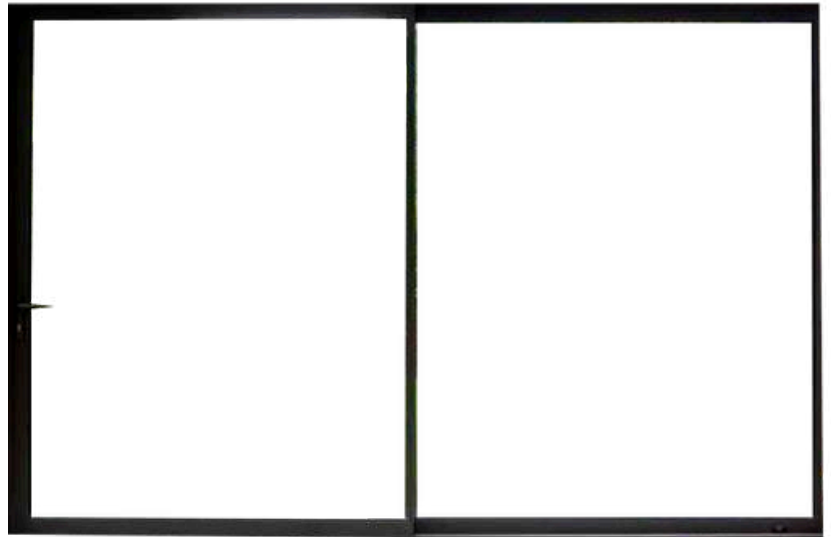


SLIM SLIDE ALUMINIUM WINDOW

Our Slim Slide Aluminium Window represents the pinnacle of modern window design, combining ultra-slim profiles with exceptional functionality.

Engineered for contemporary architecture, this sliding window system maximizes natural light while maintaining superior thermal performance and weather resistance.

- Modern design and functionality
- Imported hardware
- Smooth Sliding Mechanism
- Sleek and slim frame
- Minimalistic structure
- maximizes light
- Space-Saving Design
- Seamless connection



SKYLIGHT

Bring the beauty of natural light into your home or workspace with FRAMEZ Skylights. Designed for elegance, energy efficiency, and durability, our skylights enhance any interior by opening up your ceiling to the sky. Whether flat or sloped, our custom skylights transform ordinary spaces into bright, welcoming environments.

- Brings in natural sunlight
- Reduces electricity usage
- Adds a modern architectural touch
- Imported hardware
- Durable aluminium + glass build
- Leak-proof and weather-resistant
- Minimalistic structure
- Boosts ventilation and airflow



Facade & Curtain Wall Systems

Enhance your building's exterior with FRAMEZ's high-performance Façade and Curtain Wall solutions. Designed for modern architecture, these systems combine strength, elegance, and energy efficiency, making them perfect for both commercial and premium residential projects.

Key Benefits:

- Striking modern look for buildings
- High structural strength and durability
- Weather and corrosion resistant
- Energy-efficient design
- Full glass exterior with sleek look
- Allows maximum daylight inside
- Reduces heat and noise
- Lightweight yet strong aluminium
- Enhances thermal and acoustic insulation



OUR PREMIUM ALUMINIUM COLORS

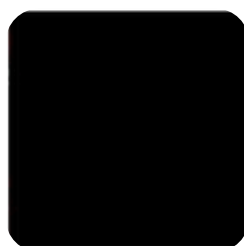
Elevate your style with our premium color collection, offering a range of elegant and durable finishes to complement any space. From timeless neutrals to bold modern hues, each shade is designed to enhance the beauty and longevity of your windows and doors



Wooden Texture



Champagne



Black



Charcoal Grey

IMPORTED HARDWARE

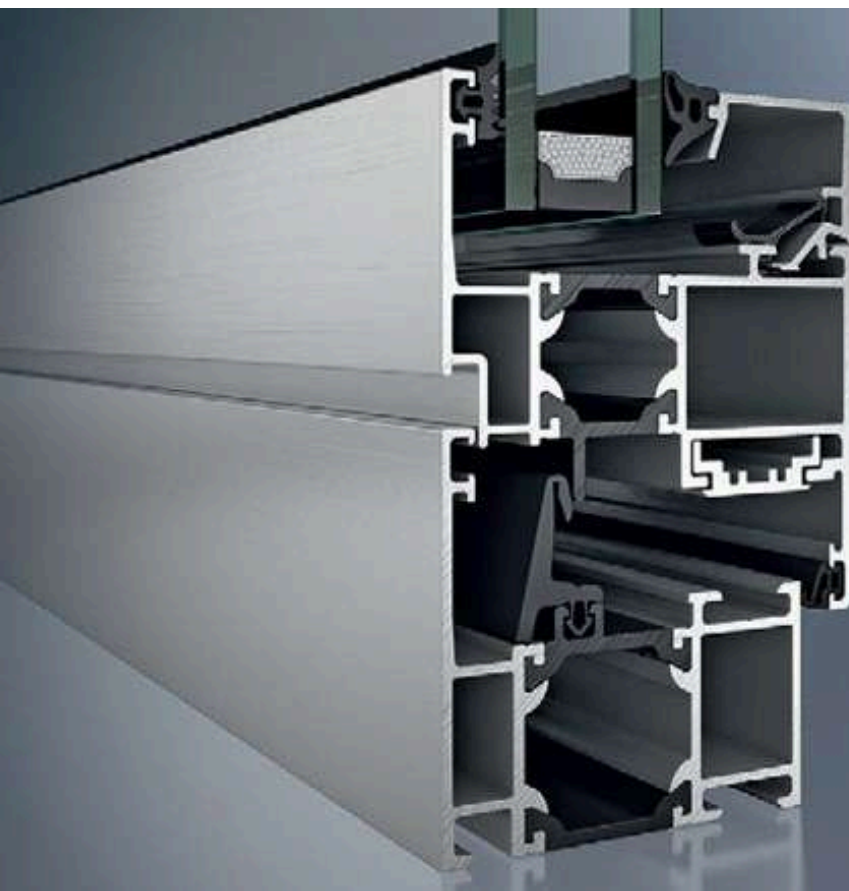
At **FRAMEZ**, we use only top-quality imported hardware to ensure smooth operation, long-lasting durability, and enhanced security for every window and door. From hinges to handles, locks to rollers—each component is selected for performance, precision, and a flawless finish. Our hardware not only supports modern design but also guarantees reliability that stands the test of time.



THERMAL BREAK ALUMINIUM WINDOW

Thermal Break technology offers excellent energy efficiency and insulation. The thermal break is a layer of insulation material inserted between the inner and outer frames, reducing heat transfer between the indoor and out door environments.

Ideal for sound proofing and large windows



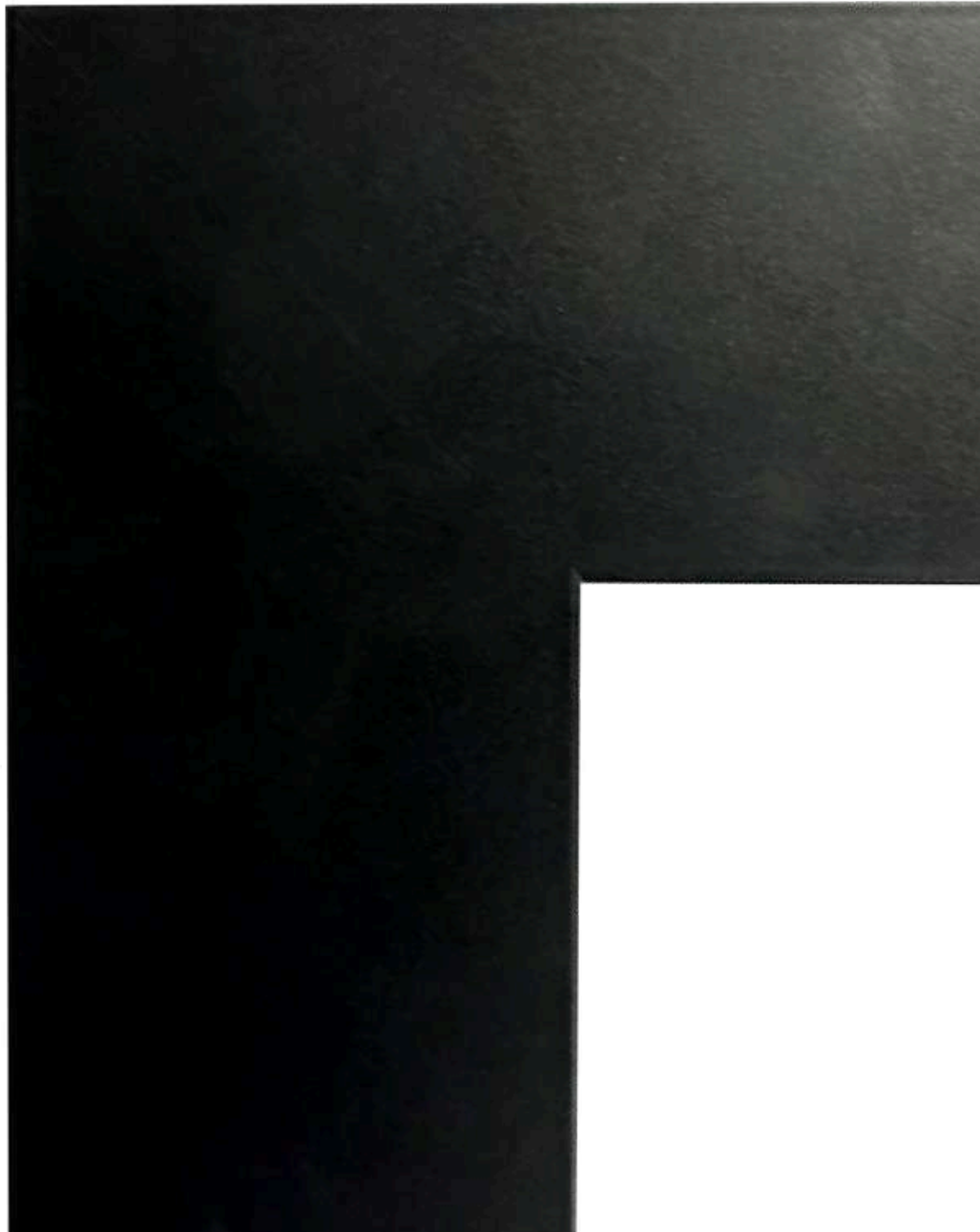
KEY SPECS

2mm Wall Thickness 4.5
Inch Section Width
Security Aluminium Grill
SS Netting Imported
Handles Heavy Duty
Hinges

ULTIMATE CORNER

High quality corner joints are ensured by using the following:

1. High precision cutting plant
2. Special Corner Joints
3. Aligners to align the surface of the profile



CROSS SECTIONS



Slim Slide
Aluminium



Thermal Slim
Openable



Local Sliding &
Openable

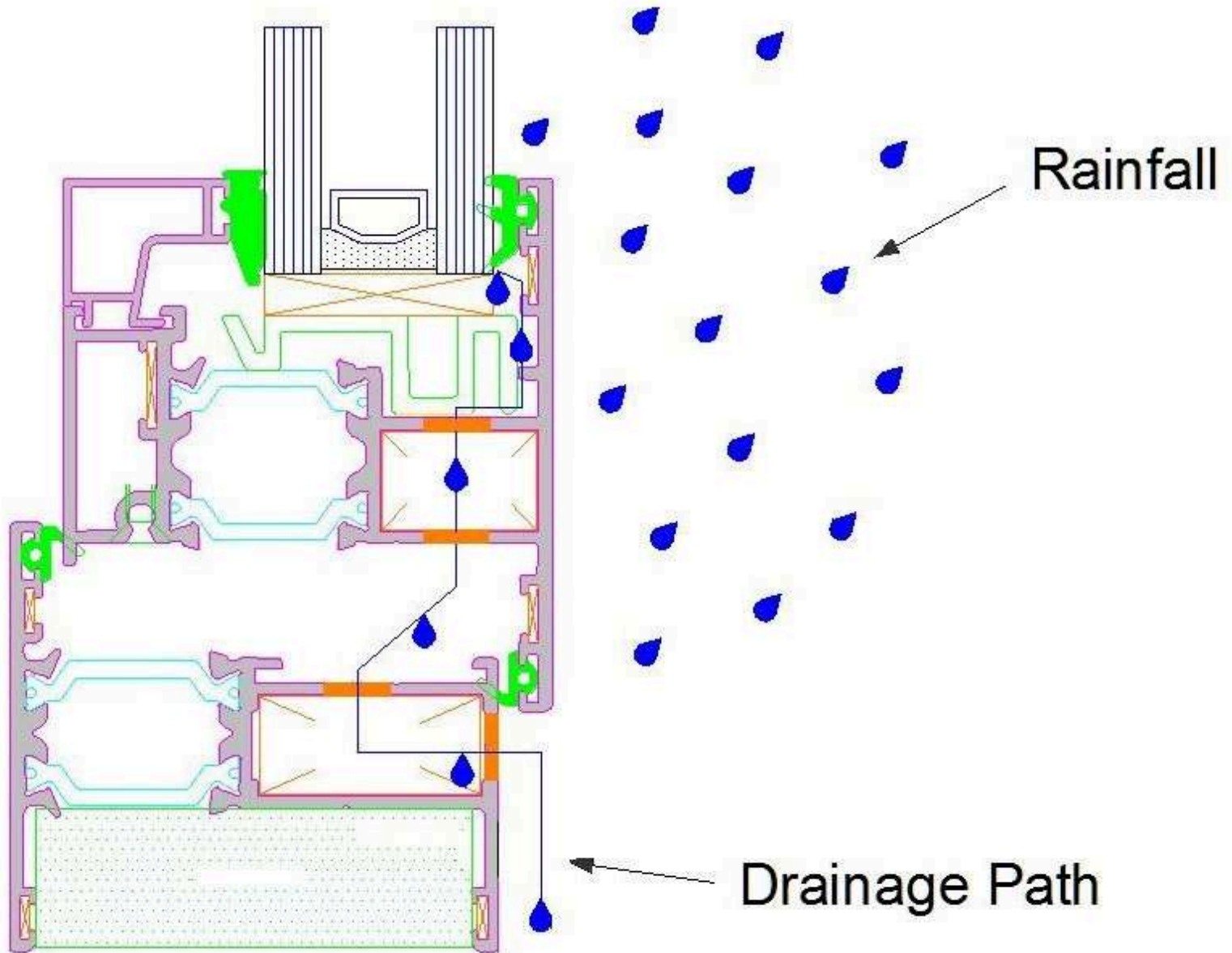


Non Thermal
Open Out



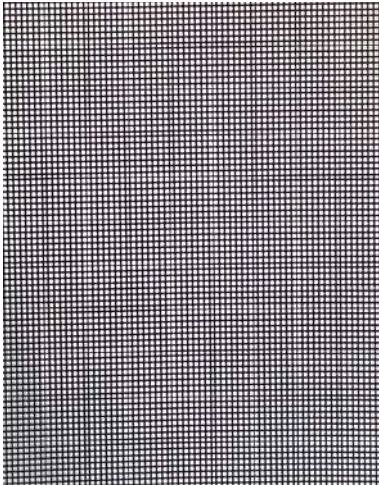
Thermal Break

DRAINAGE PATH



The water drainage system of Aluminium profile is designed to efficiently channel rainwater away, preventing water accumulation and ensuring a dry, secure interior. With built-in drainage pathways, it effectively manages water flow, reducing the risk of leaks and moisture damage. This system enhances the durability of windows and doors, making them highly weather-resistant and long-lasting. Whether during heavy rainfall or high humidity, the advanced drainage design ensures optimal performance and protection for your space.

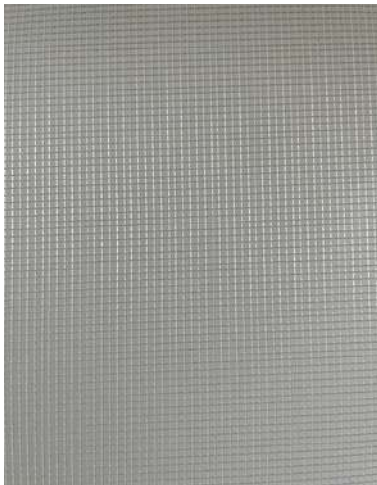
NETTING



SS Netting

SS Netting

- Stainless steel mesh
- Provides ventilation while keeping insects out
- Corrosion-resistant
- Easy to maintain



Fiber Netting

Fiber Netting

- Lightweight and flexible for easy installation
- Allows airflow while blocking insects
- Resistant to rust and weather damage



Zigzag Netting

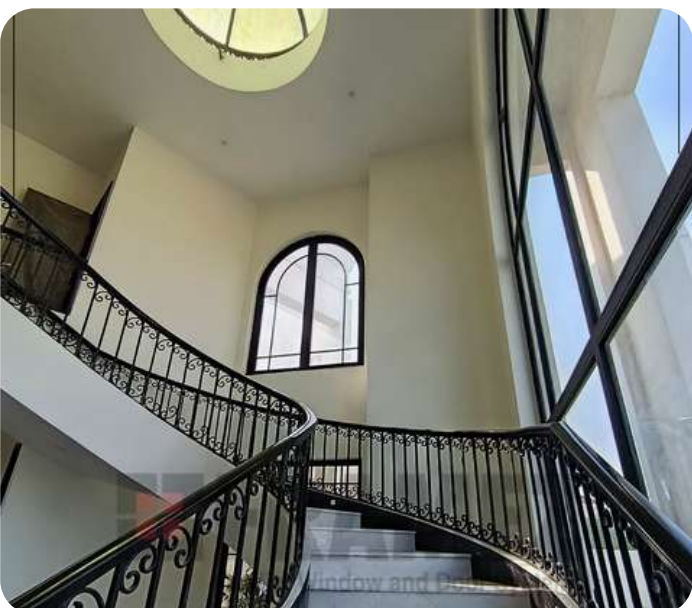
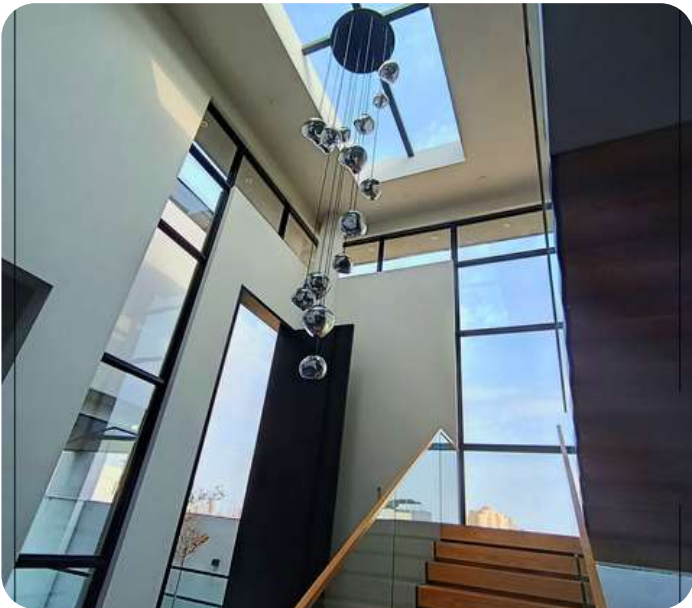
Zigzag Netting

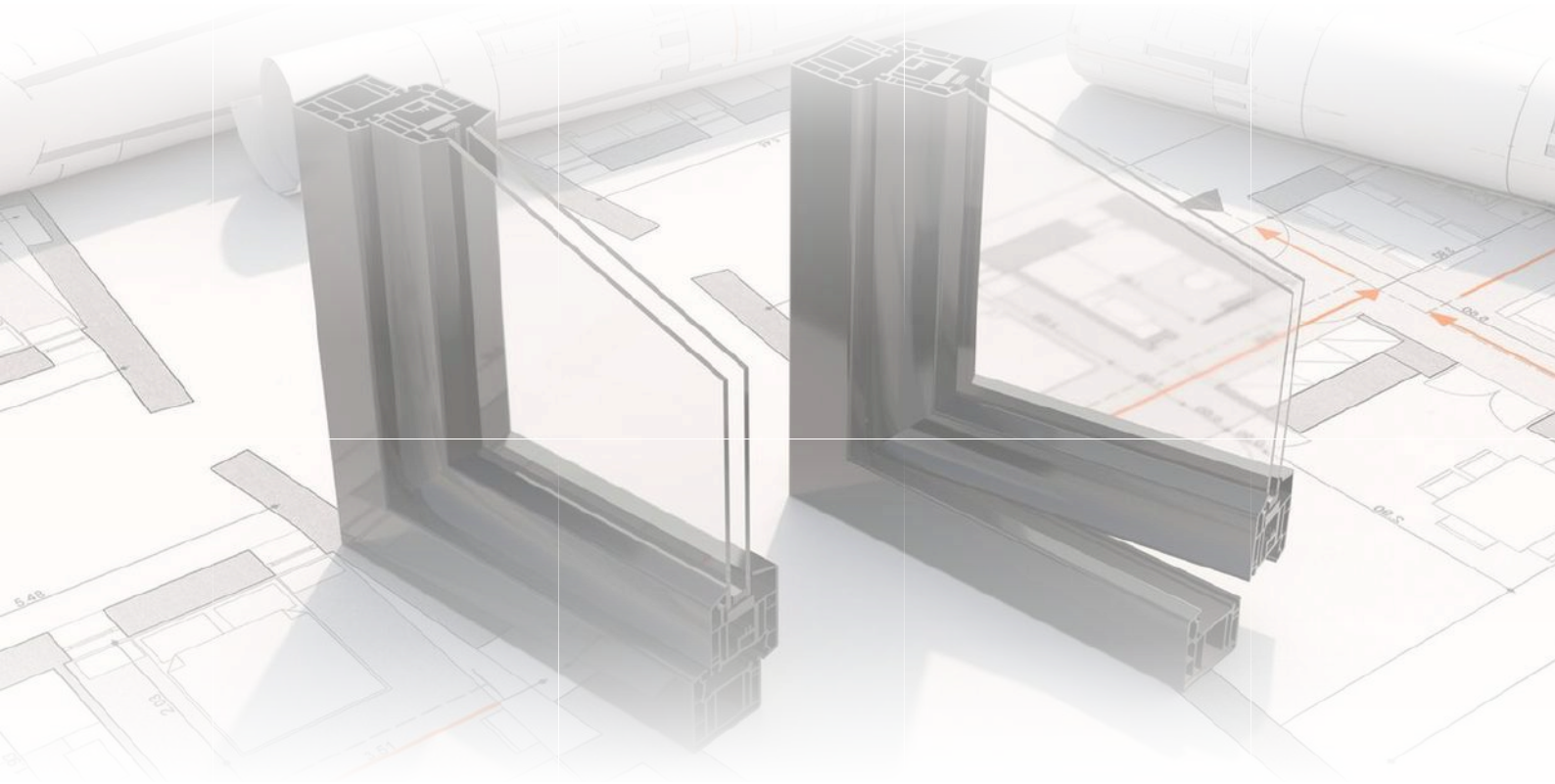
- Innovative zigzag design for smooth operation
- Compact & retractable for space-saving convenience
- Provides excellent insect protection with durable mesh

OUR PROJECTS



OUR PROJECTS






FRAMEZ

Quality Window and Door Systems



GET IN TOUCH

 0302-8213340

 www.framez.com.pk

   /framezhomes

Showroom: C-89-D, 11th Commercial Street, Khayaban-e-Jami, Phase 2 Extension, DHA, Karachi, Pakistan-75500